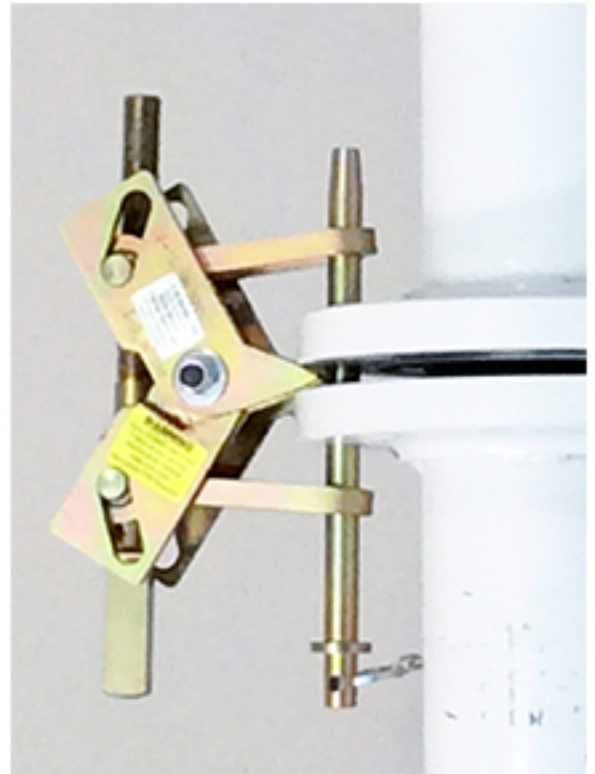




Side-Winder Flange Spreader



The Side Winder Flange Spreader has been tested for continuous use at 15000 lbs spreading force. = 150 foot pounds of torque.

Suggested Maximum torque of 100 foot pounds = 10,000 lbs spreading force.

Designed to be used with an adjustable wrench The jaw assembly is constructed of Alloy Plates (#T1 or ASTM A514 grade B.) The screw is constructed of 4140, equivalent to a B7 Stud. The Travelers and Pin are constructed of 1144 (High strength steel - Meets the ASTM A311)

Restraint Straps are constructed of A36 Steel Plate

Bolt through Jaw Assembly is a grade 8, 7/16" dia. Alloy steel bolt

As an additional SAFETY precaution, this tool was constructed with the above materials so it will bend before it breaks.